

TAWERS
LA-1800G3



Multi-Purpose Robot



LA1800G3



Panasonic's middle-sized versatile robot

Best-in-class

MATERIAL HANDLING

- For transfer/assemble/process
- Available to use with welding robot in cooperation

WELDING

- TAWERS (WG3/WGH3)
- Available to use with external power source

MULTI-FUNCTION

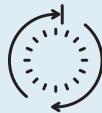
- Controllable both jig tool and welding torch simultaneously
- Usable with a fixed tool

LOAD CAPACITY



Best-in-class
26 kg

MAX. SPEED



Best-in-class
370 °/s

MAX. REACH



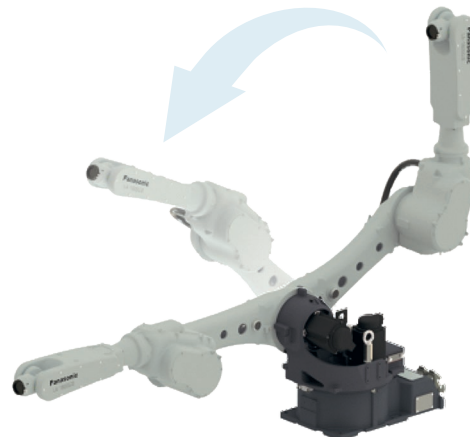
Best-in-class
1,801 mm

POWERFUL

- Large capacity servo motor
- High precision reduction gear

HIGH SPEED

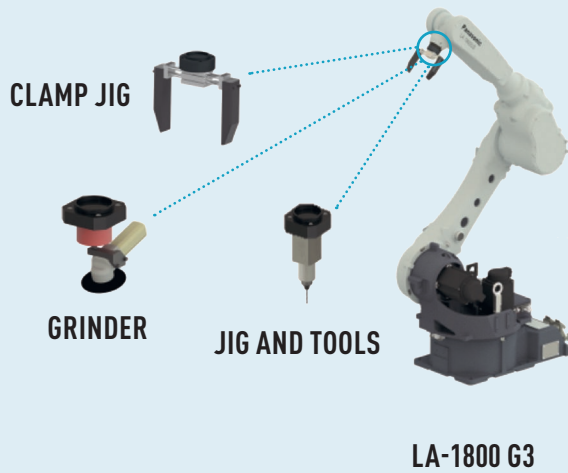
- High rigidity arm
- Optimal control available in accordance with the load



MATERIAL HANDLING MODE

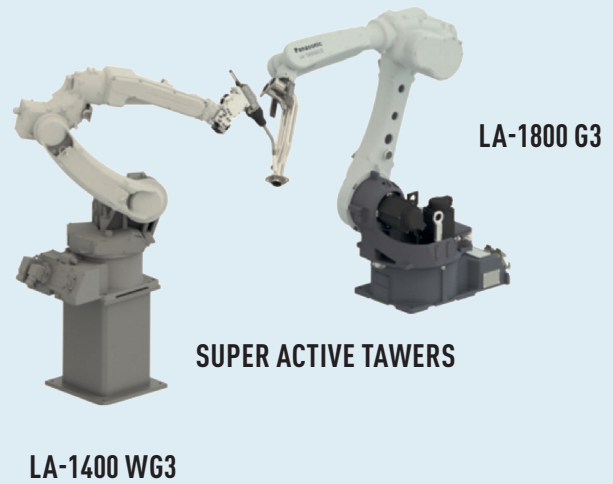
FOR TRANSFER / ASSEMBLE / PROCESS

- For processes using jig tools with
- Enable to be applied to multiple processes by using a tool changer



OPERABLE WITH WELDING ROBOT

- Offer optimal welding position in robot cooperative operation
- Enable to be applied to multiple workpieces by changing jigs



WELDING MODE

TAWERS

- Power unit: WG3/WGH3
- Application: TIG/Super Active



EXTERNAL WELDING MACHINE

- Enable to be worked with Panasonic full digital welding machine



MULTI-FUNCTION MODE

USING BOTH JIG TOOL AND TORCH

- Enable to apply both material handling and welding processes with a robot
- Enable to save operation space



LA-1800 WG3

USING A FIXED TOOL

- Enable to be worked with Panasonic full digital welding machine



LA-1800 WG3

BENEFITS

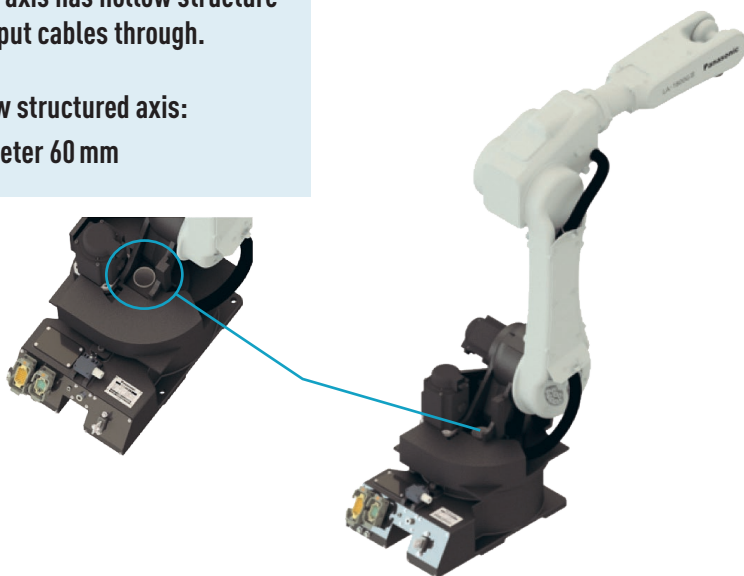
The unique Panasonic technology of the LA1800 offers several benefits

- optimise welding cycle times
- higher productivity output
- cost cut down
- time save when setting up the welding programmes

HOLLOW STRUCTURED PIVOT AXIS

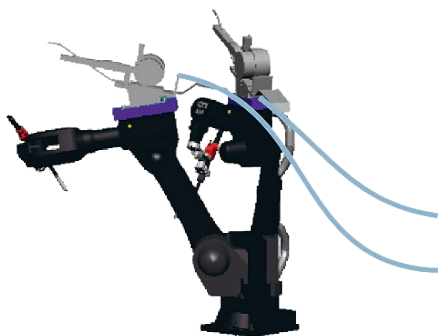
The RT pivot axis has hollow structure as it can be put cables through.

Large-hollow structured axis:
hollow diameter 60 mm



HOLLOW SIZE OF CONVENTIONAL ROBOT (REFERENCE)

- Enable to apply both material handling and welding processes with a robot
- Enable to save operation space

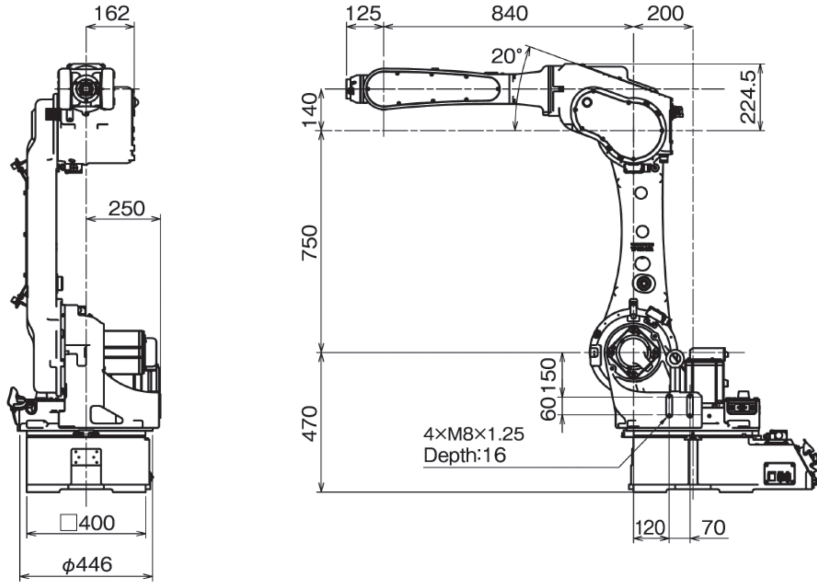


ENABLE TO AVOID:

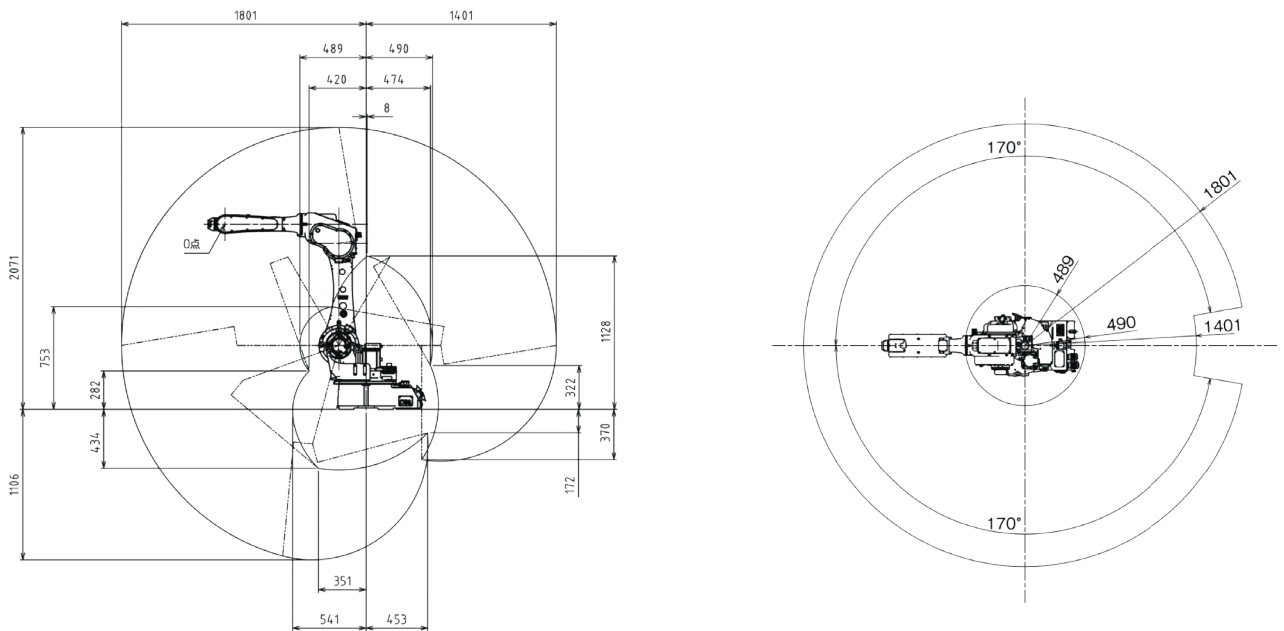
- Too many cable broken accidents
- Production line down time occurrence
- Unnecessary repair costs increase

TECHNICAL DETAILS

DIMENSIONS



OPERATING RANGE



COMPANY PROFILE

Since 1957, a total of 60 years, Panasonic has been developing innovative products and processes for welding technology. Areas of application are laser welding, Metal Inert Gas welding (MIG), Metal Active Gas welding (MAG) and Tungsten Inert Gas welding (TIG) for robot as well as manual welding. Panasonic Robot & Welding Systems Europe, headquartered in Neuss, Germany, is the European sales and engineering center for all welding products. The state-of-the-art competence and training center has a welding test area for all actual robot welding systems. Panasonic is also represented in almost every European country with a broad-based system and sales partner network. Our goal is to support the entire industry with "everything from one manufacturer" solutions in the field of robot welding applications.

PRODUCTS & SERVICES

Panasonic Robot & Welding offers turnkey, automated welding systems for arc and laser welding – with welding robots, welding power sources, welding torches etc., void of interface problems for various welding tasks in industrial production. Whether general industry or the automotive industry, we always offer the optimum solution based on user requirements for the product to be produced.



 PARTNER – SALES & SERVICE

 PARTNER – SYSTEM HOUSES

 PANASONIC

Panasonic Industry Europe GmbH
Robot & Welding
Jagenbergstraße 11a
D-41468 Neuss, Deutschland